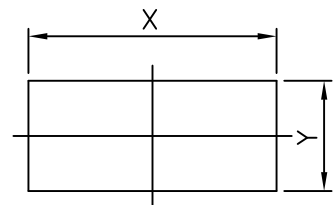


TR26-1 SERIES

Panel Cut-Out Dimensions



Contact Rating: 16A 125VAC 1/4HP (UL-105°C)
 16A 250VAC 1/4HP
 16A (4) 250V~T120

Initial Contact Resistance: 30mΩ Max

Insulation Resistance: 500MΩ Min. 500VDC

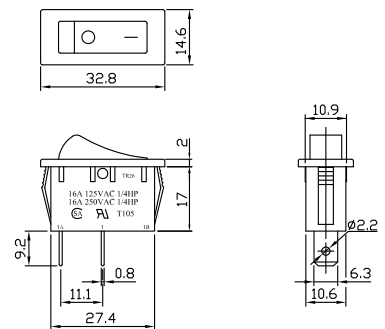
Withstand Voltage: 2000VAC-1 Minute

Electrical Life: Over 10000 Cycles

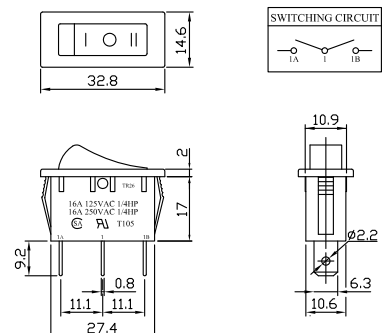
Operating Force: 500± 200gf

Panel Thickness	DimX	DimY
0.7~1.25	29.9~30	11~11.1
1.25~2.0	30.1~30.2	11~11.1
2.0~3.0	30.4~30.5	11~11.1

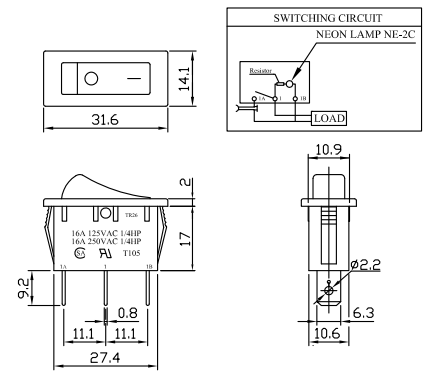
TR26-11C-11F1



TR26-13F-11F1



TR26-11C-13F1L



CAP-C

