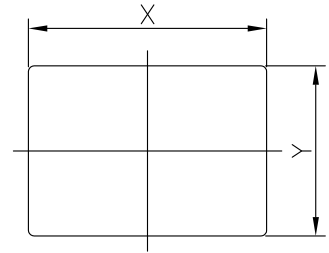


TR01 SERIES

Panel Cut-Out Dimensions



Contact Rating: TV-6 SA

10A 125/250 VAC UL SA

16A 125/250VAC UL

10A/100A250V~T85

Inrush Current: 100A

Initial Contact Resistance: 30mΩ Max

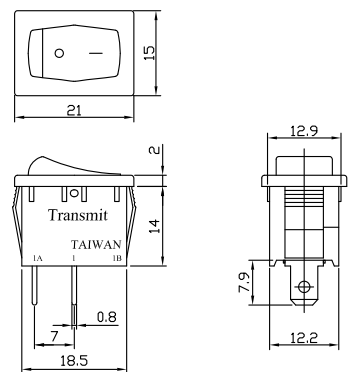
Insulation Resistance: 500MΩ Min. 500VDC

Withstand Voltage: 2000VAC-1 Minute

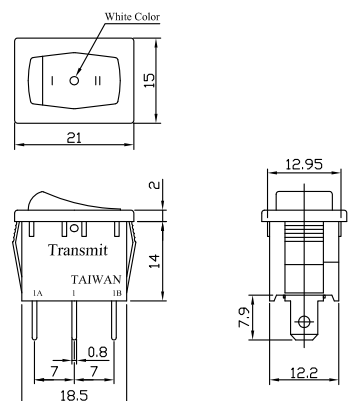
Electrical Life: 10,000 Cycle

Panel Thickness	DimX	DimY
0.7~1.25	19.1~19.2	12.9~13
1.25~2.0	19.3~19.4	12.9~13
2.0~3.0	19.7~19.8	12.9~13

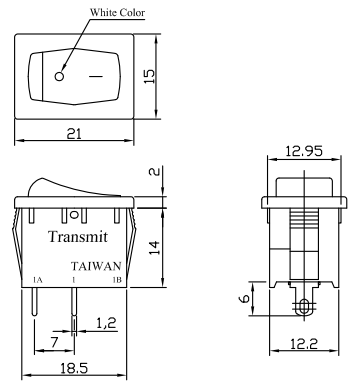
TR01-11C-11L



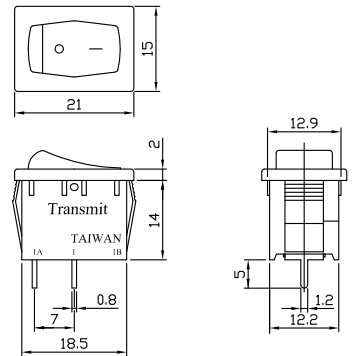
TR01-13F-11L



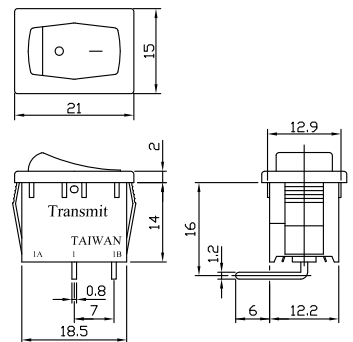
TR01-11C-11S



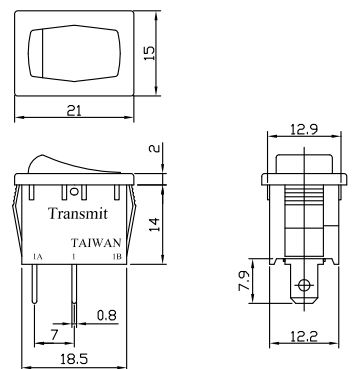
TR01-11C-11Q



TR01-11C-13P1B



TR01-21L-99LV



CAP-S

