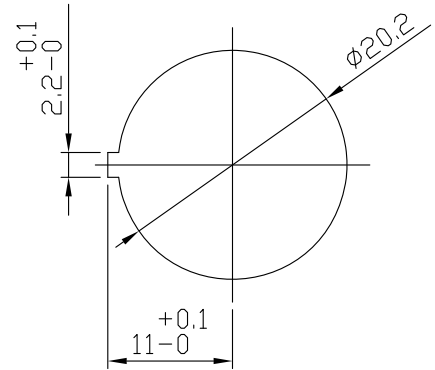


# TR01-3 SERIES

Panel Thickness 1.0~2.0mm



Contact Rating: 10A 125/250 VAC UL SA  
10A/100A250V~T85

Inrush Current: 100A

Initial Contact Resistance: 30mΩ Max

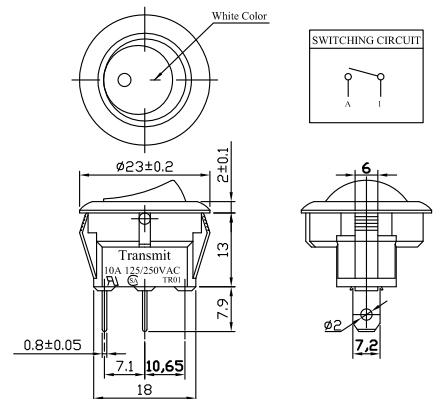
Insulation Resistance: 500MΩ Min. 500VDC

Withstand Voltage: 2000VAC-1 Minute

Electrical Life: 10,000 Cycle

Operating Force: 500± 150Gram

## TR01-31C-11L



## TR01-33F-11S

