

» Features

- Miniature structure with long traveling.
- Several LED colors options.
- Customized cap and symbols are available.
- Combination of switch linked with LED avoid the LED failure during high-temperature processing.
- Water proof IP67 sealed.



» Applications

- Operating switches in all types of electronic equipment such as audio apparatus, office equipment, communications apparatus, TV sets, VCRs, etc.

» Specifications

Rating	50mA 12VDC	
Insulation Resistance	100MΩ Min (at 250 VDC)	
Dielectric Strength	AC 250V (50/60 Hz for 1 minute)	
Contact Resistance	100mΩ Max. (Initial)	
Electrically Life	100,000 Cycles Min	
Ambient Temperature	-30°C~ +80°C	
Operating Force	160 ± 50gf	Long: 250 ± 50gf
Total Travel	0.37 ± 0.1mm	Long 0.6± 0.3mm

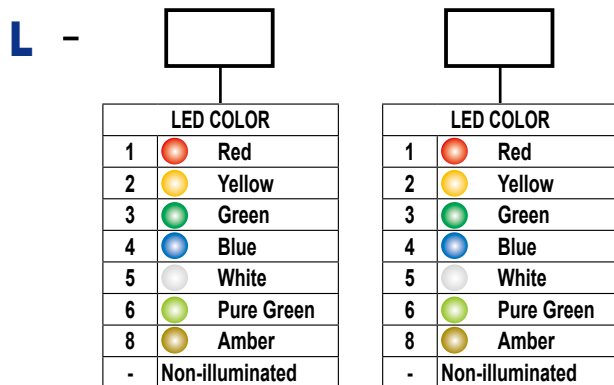
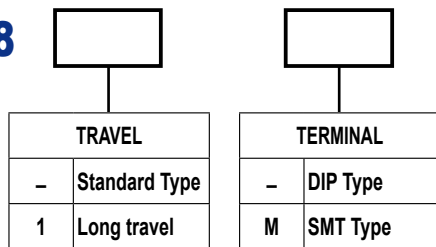
» LED Specifications

Color	VR	IF	Recommended Operating Current	VF	
				Nor	Max
Red	DC 5V	20mA	20mA	1.7V	2.4V
Green	DC 5V	20mA	20mA	1.9V	2.4V
Yellow	DC 5V	20mA	20mA	1.9V	2.4V
Blue	DC 5V	20mA	20mA	3.0V	3.6V
White	DC 5V	20mA	20mA	3.0V	3.6V

For the specification about the other LEDs, please contact with sales department

» Product selection

TP 6148



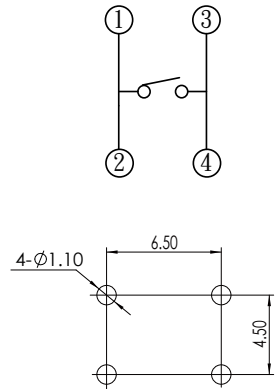
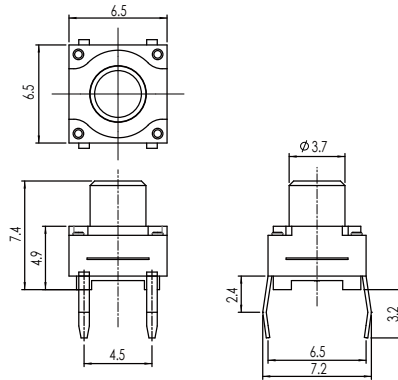
» Operating characteristics

Unit: mm

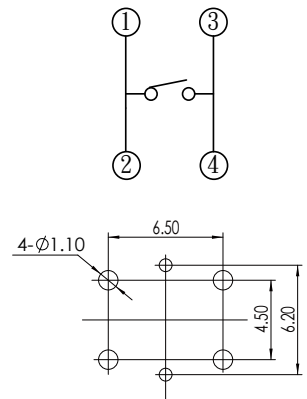
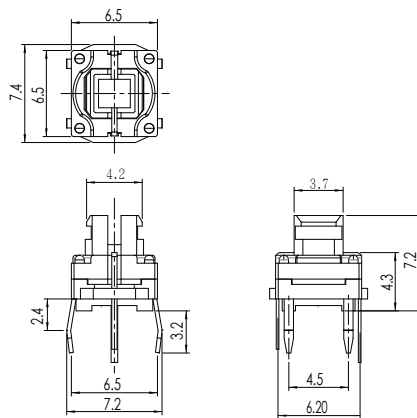
Dimensions

P.C.B Layout

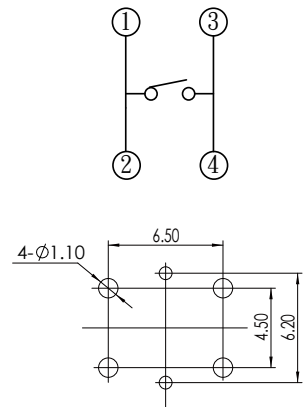
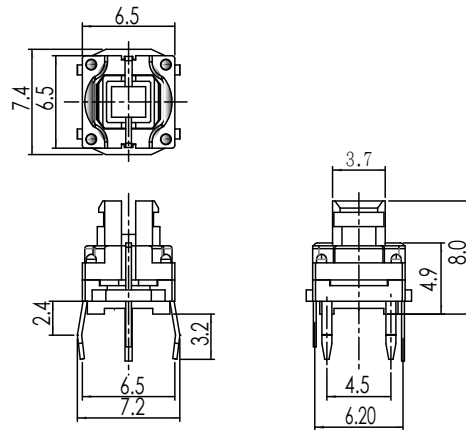
TP6148



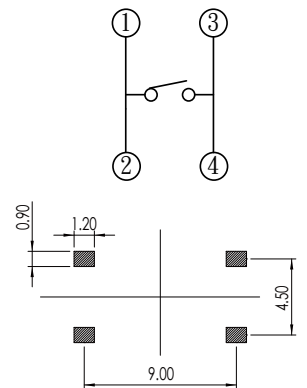
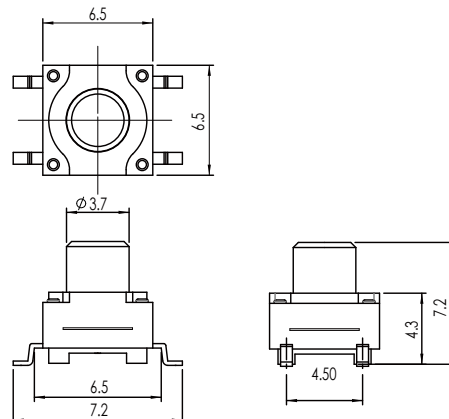
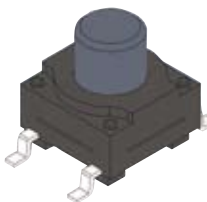
TP6148L



TP61481L



TP6148M



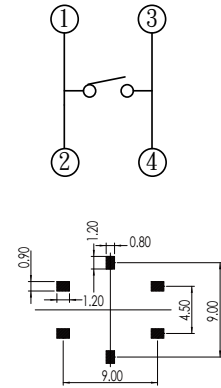
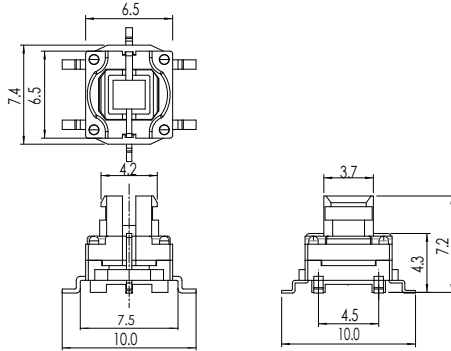
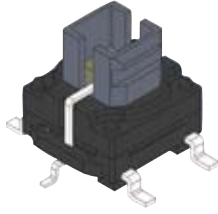
» **Operating characteristics**

Unit: mm

Dimensions

P.C.B Layout

TP6148ML



TP61481ML

