

CONTROL UNITS

SELECTOR SWITCH

Structure Description

Mounting Holder

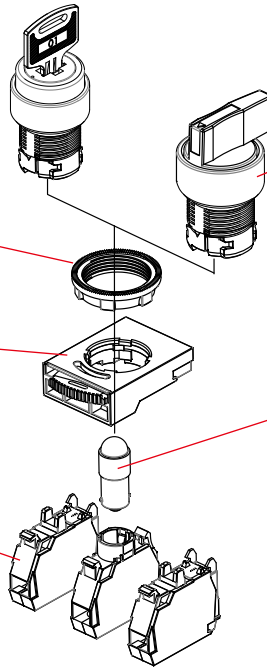
Mounting adapters available to make $\phi 22\text{mm}$ compatible to $\phi 30\text{mm}$ Mounting diameter.

Mounting Ring

Smart mounting ring can carry with various push button type

Contact Block

Slow-action: 1NC,1NO.
Easy stackable contact block.
Compatible With LED holder.
Easy handling design.



SELECTOR

7 operation position options.
Non-LED or LED options
Several cap color options
Long shaft normal shaft
Selector & key Type

S S-9 LED LAMP

Several LED color options
Several bulb voltage options
AC.DC 24V
AC.DC 110-120V
AC.DC 220-240V
AC 380-440V
AC.DC 12V

Product Selection

H□22-□ □ □ □ □ □

1 2 3 4 5 6 7

1. SERIES

HSS22 Non-Illuminated

HLS22 LED Illuminated

2.TYPE

HSS22

HLS22

S Normal Shaft

S Normal Shaft

L Long Shaft

L Long Shaft

K Key

4.CONTACT BLOCKS

10 1NO 21 2NO/1NC

01 1NC 12 1NO/2NC

11 1NO/1NC 22 2NO/2NC

20 2NO 02 2NC

3.POSITION

2 2 Position 90°



1 2 Position 90°
(Spring Return)



3 3 Position 45°



0 3 Position 45°
(Spring Return)



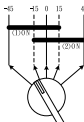
4 3 Position 45°
(Spring Return From Left)



5 3 Position 45°
(Spring Return From Right)



6 2 Position 90°
(Signal continuous)



5.CAP COLOR

HSS22

HLS22

R RED

R RED

G GREEN

G GREEN

Y YELLOW

Y YELLOW

B BLACK

6.LED BULB VOLTAGE

A AC.DC 24V

E AC.DC 110-120V

I AC.DC 220-240V

M AC 380-440V

Y AC.DC 12V

7.Positions of removable key

Code	3 Position			2 Position	
	Left	Center	Right	Left	Right
0		√			
1	√	√			
2		√	√		
3	√	√	√		
4	√			√	
5			√		√
6	√		√	√	√

HIGHLY

G7

Design, specifications are subject to change without notice.

CONTROL UNITS

Operating Characteristics

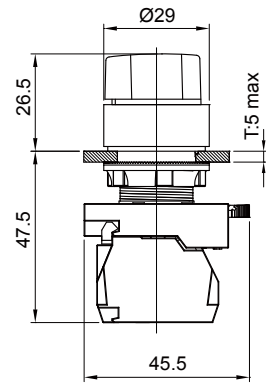
Unit: mm

Item Description Dimensions

HLS22-S2/HSS22-S2



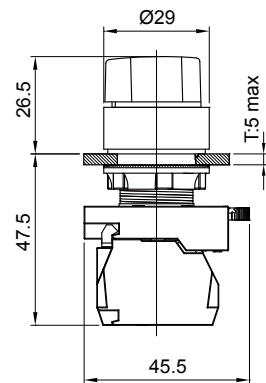
HEAD TYPE	ITEM	CAP COLOR
LED illuminated. HLS22-S2: Normal Shaft	HSS22-S2□R	RED
	HSS22-S2□G	GREEN
	HSS22-S2□Y	YELLOW
HSS22-S2: Normal Shaft	HSS22-S2□B	BLACK
	HLS22-S2□R	RED
	HLS22-S2□G	GREEN
	HLS22-S2□Y	YELLOW



HLS22-S3 / HSS22-S3



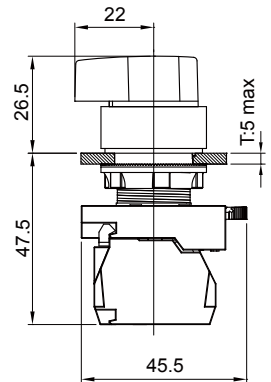
HEAD TYPE	ITEM	CAP COLOR
LED illuminated HLS22-S3: Normal Shaft	HSS22-S3□R	RED
	HSS22-S3□G	GREEN
	HSS22-S3□Y	YELLOW
HSS22-S3: Normal Shaft	HSS22-S3□B	BLACK
	HLS22-S3□R	RED
	HLS22-S3□G	GREEN
	HLS22-S3□Y	YELLOW



HLS22-L2 / HSS22-L2



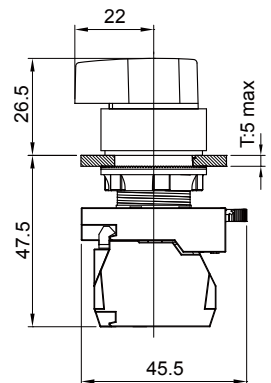
HEAD TYPE	ITEM	CAP COLOR
LED illuminated HLS22-L2: Long Shaft	HSS22-L2□R	RED
	HSS22-L2□G	GREEN
	HSS22-L2□Y	YELLOW
HSS22-L2: Long Shaf	HSS22-L2□B	BLACK
	HLS22-L2□R	RED
	HLS22-L2□G	GREEN
	HLS22-L2□Y	YELLOW



HSS22-L1/ HLS22-L1



HEAD TYPE	ITEM	CAP COLOR
LED illuminated HLS22-L1: Long Shaft	HSS22-L1□R	RED
	HSS22-L1□G	GREEN
	HSS22-L1□Y	YELLOW
HSS22-L1: Long Shaf	HSS22-L1□B	BLACK
	HLS22-L1□R	RED
	HLS22-L1□G	GREEN
	HLS22-L1□Y	YELLOW



HIGHLY

G8

Design, specifications are subject to change without notice.

CONTROL UNITS

Dimensions

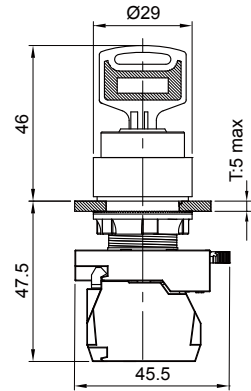
Unit: mm

Item Description Dimensions

HSS22-K0



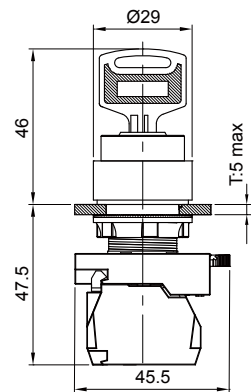
HEAD TYPE	ITEM	CAP COLOR
HSS22-K0: Key Type	HSS22-k0□B	BLACK



HSS22-K3



HEAD TYPE	ITEM	CAP COLOR
HSS22-K3: Key Type	HSS22-k3□B	BLACK



HIGHLY

G9

Design, specifications are subject to change without notice.